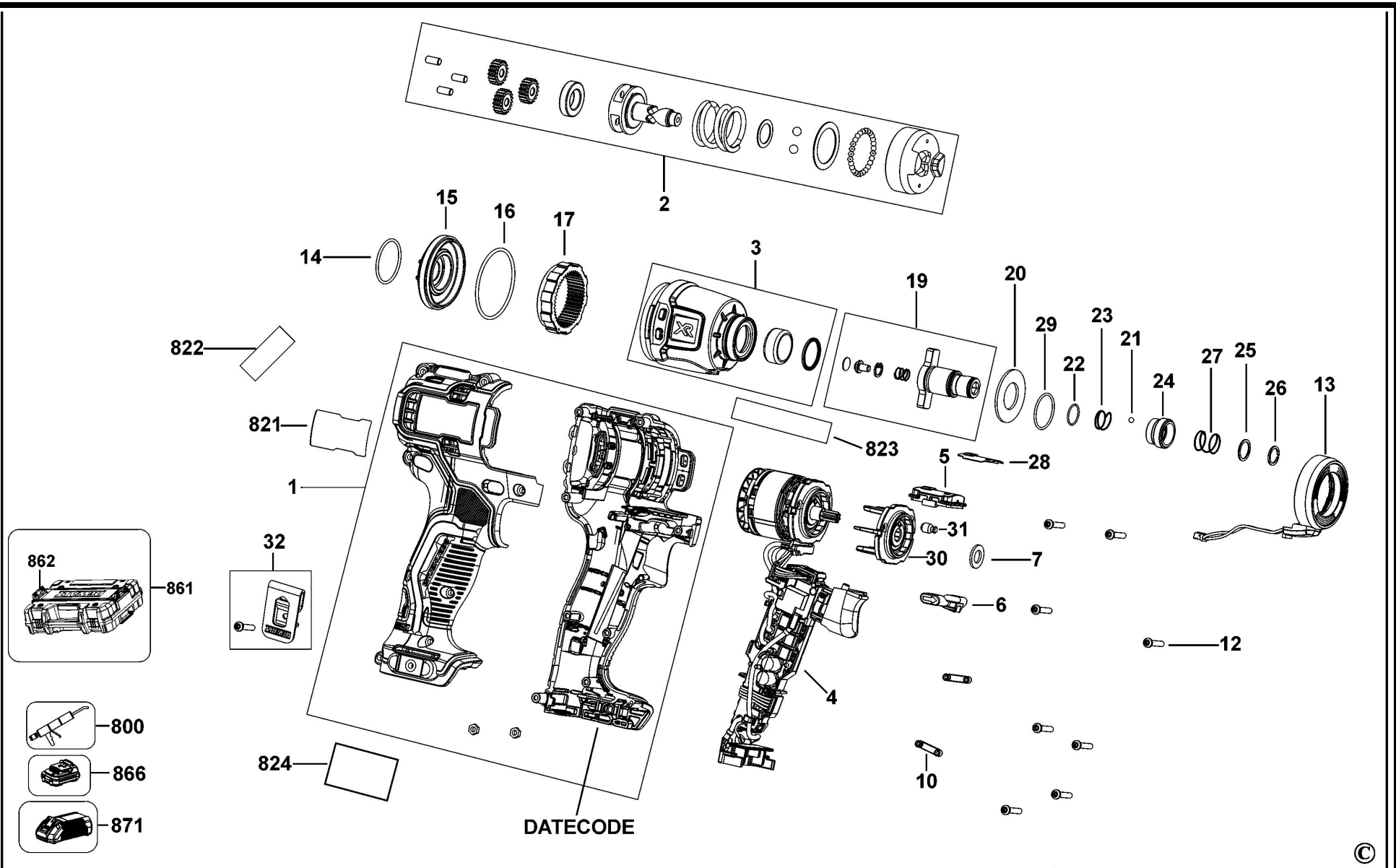


# DCF801 IMPACT DRIVER 1



## Parts List DCF801 IMPACT DRIVER 1

Item	Part Number	Qty	Part Description	General Description	Other Info	Repair Inst	Markets
1	N646866	1	CLAMSHELL SET			No	QW
2	N854486	1	IMPACTOR			No	QW
3	N629042	1	NOSE SA			No	QW
4	N646881	1	MOTOR & SWITCH SA			No	QW
5	N563578	1	SWITCH & PCB SA			No	QW
6	N399342	1	ACTUATOR FWD/REV			No	QW
7	N556099	1	FELT			No	QW
10	N261987	2	CAP			No	QW
12	N463678	8	SCREW			No	QW
13	N594286	1	LED LIGHT			No	QW
14	N555946	1	O RING			No	QW
15	N538455	1	MOUNT			No	QW
16	N548553	1	O RING			No	QW
17	N538445	1	GEAR			No	QW
19	N632763	1	ANVIL ASSEMBLY			No	QW
20	642883-00C	1	WASHER			No	QW
21	N089668	1	BALL STEEL			No	QW
22	N424032	1	RING			No	QW
23	N437890	1	SPRING			No	QW
24	N612522	1	SLEEVE			No	QW
25	N453417	1	WASHER			No	QW
26	N421245	1	RING			No	QW
27	N019351	1	SPRING			No	QW
28	N565674	1	LABEL			No	QW
29	N561479	1	O RING			No	QW
30	N556495	1	ADAPTOR			No	QW
31	N593131	1	PLUG			No	QW
32	N702958	1	HOOK SA			No	QW
800	870889-02	1	GREASE			No	QW
821	N650898	1	RATING PLATE			No	QW
824	N665619	1	LABEL			No	QW
861	N614791	1	KITBOX			No	QW

## Parts List DCF801 IMPACT DRIVER 1

Item	Part Number	Qty	Part Description	General Description	Other Info	Repair Inst	Markets
862	H1500082008	2	LATCH			No	QW
866	N752771	1	BATTERY PACK 12V			No	QW
866	N757624	1	BATTERY 12V-2AH-24WH		DCF801D2	No	QW
871	N394633	1	CHARGER 10.8V - 18V			No	QW